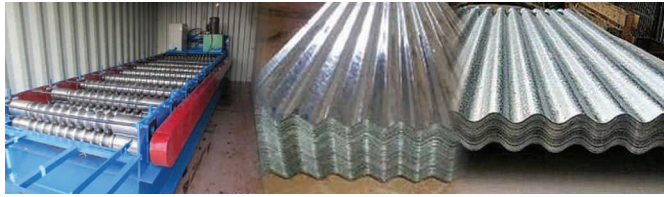


## **CORRUGATED MILD STEEL SHEETS**

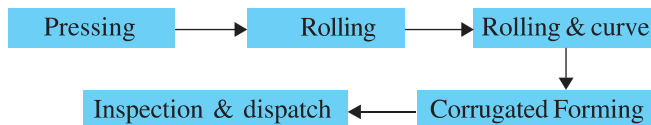


**Production capacity/annum** 30,000 nos  
( 8,10,12 Feet/sheet )

### **Production process**

Mild steel galvanized sheets are first pressed in the hydraulic press and a curved shape is given by the first set of rollers. Then in the second step, second set of rollers are used to further curve the sheet and finally the sheet is corrugated in the third step with the help of rollers.

### **Process flow chart**



### **Machinery & equipment required**

- Hydraulic press 2 Nos.
- Compressor 1No.

### **Raw material/consumables required**

- Mild steel sheets

### **Utilities required**

Power required (load) in KW : 40KW.  
Water required (per shift basis) : Normal supply

### Manpower required

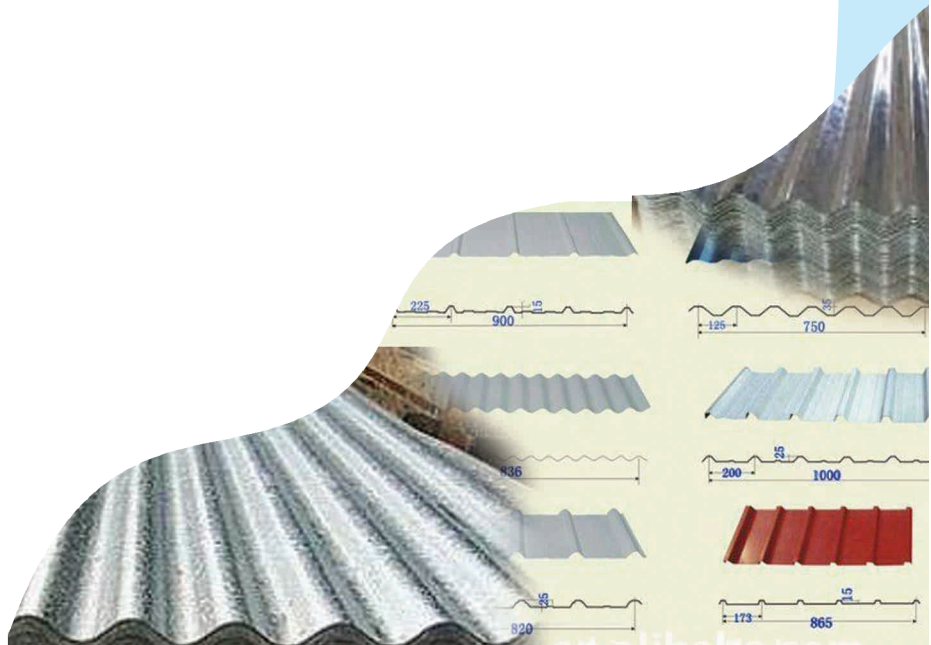
- Manager : 1 No.
- Supervisor : 1 No.
- Skilled Worker : 3 Nos.
- Unskilled Worker : 4 Nos.

### Area required:

- Total Area : 150 Sq. Mtr.  
Covered Area : 100 Sq. Mtr.

### Investment required

- Machinery & Equipment : }  
Working Capital for 3 Months : } ₹ 77.15 Lakhs  
(Raw material, utilities & salary)



For further details on training programme in entrepreneurship being conducted at NSIC Training cum Incubation Centre, you may contact NSIC-TSC, Okhla Industrial Estate, New Delhi 110020, Ph.: 011-26826801